

Thermography, Thermal Camera's and the Misinterpretation of Data.

Presented by

Malbar Thermal Imaging

With the increased availability and affordability of Thermal Imagers (or Thermal 'Cameras' as they are also known), there is an ever increasing incidence of data being incorrectly collected and /or interpreted.

This misinterpretation of data can be compared with when Digital Multimeters (DMM) became more common in Industry. The range settings on most DMM's are automatic. Fully automatic Thermal Camera's are not yet available!

Images 1 and 2 below show exactly the same 'target' but with different emissivity* settings. Note the difference in temperature within the Ar1 (area) circle in both of the images.

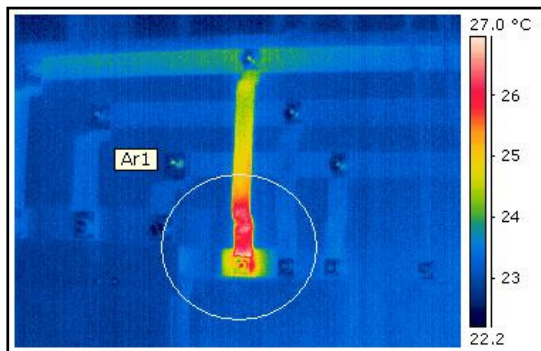


Image 1

Ar1 = 26.9°C
Emissivity = 0.95

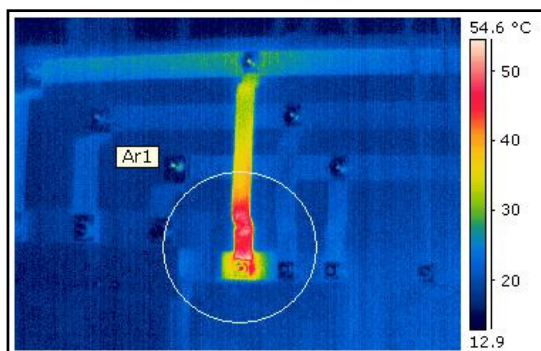


Image 2

Ar1 = 53.2°C
Emissivity = 0.1

**Note: Emissivity is one of the adjustable settings within the Thermal Camera.*

As Thermal Imaging is a requirement in many Industries and Professions for diagnostic assessment, accurate data collection is a top priority.

A decision made on flawed or inaccurate data has the ability to negatively affect a businesses reputation or livelihood.

Images 3 and 4 below were shown in a 'Professional Report'. The digital image has no relevance to the Thermal Image. This situation makes it difficult (if not impossible) for the 'lay' person to gain any benefit from the imaging.

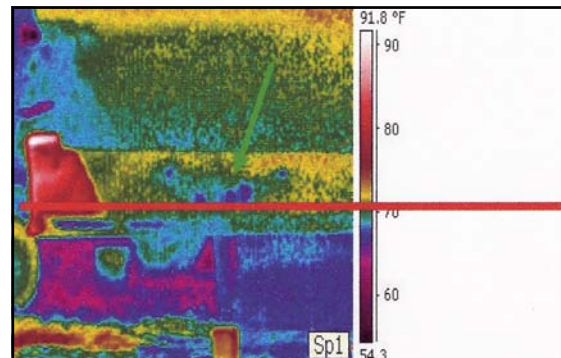


Image 3



Image 4

As a service, Malbar Thermal Imaging (MTI) has been conducting free information evenings and seminars for a large range of Industries and Professions over many years.

As a distributor of FLIR products, MTI have a range of FLIR Thermal Camera's available for purchase. Specifications for the Camera's are available on MTI's website. Contact MTI directly for stock availability.

For further information or if you or your Organisation would like to receive a presentation on Basic Thermography or Thermal Camera use, MTI may be contacted on; Freecall 1800 244 566. Alternately visit their website, www.malbargroup.com.au